



CT-Mount Installation Instructions

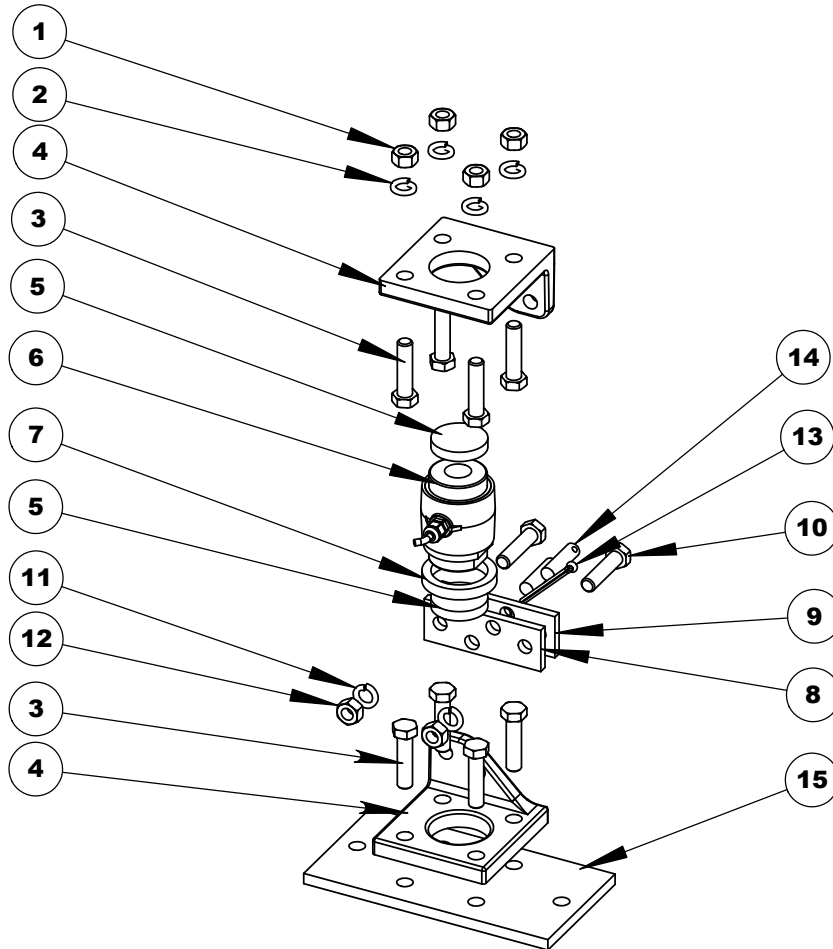


FIGURE 1

PARTS LIST

KEY	QTY	DESCRIPTION	PN	NOTES
1	-	NUT- 5/8" DIA. OR M16	-	USER SUPPLIED, NOT INCLUDED WITH KIT
2	-	LOCK WASHER- 5/8" OR M16	-	USER SUPPLIED, NOT INCLUDED WITH KIT
3	-	BOLT-5/8" DIA. OR M16	-	USER SUPPLIED, NOT INCLUDED WITH KIT
4	2	CT MOUNT HALF	153022	INCLUDED WITH KIT
5a	2	STEEL SHIM	404033	INCLUDED FOR STATIONARY SCALE
5b	2	RUBBER SHIM	400118	INCLUDED FOR MOBILE SCALE
6	-	CT LOAD CELL	-	ORDER SEPERATLY
7	1	SEALING RING	830409	INCLUDED WITH KIT
8	1	PLATE-CT MOUNT W/THREADS	153023	INCLUDED WITH KIT
9	1	PLATE-CT MOUNT WELDED	153022	INCLUDED WITH KIT
10	2	BOLT-M16X2X65MM	-	INCLUDED WITH KIT
11	2	NUT-M16X2	-	INCLUDED WITH KIT
12	2	LOCK WASHER- M16	-	INCLUDED WITH KIT
13	1	COTTER PIN	-	INCLUDED WITH KIT
14	2	PIN-CT MOUNT	-	INCLUDED WITH KIT
15	1	PLATE-CT MOUNT	400419	OPTIONAL (FOR MOUNTS ON CONCRETE)

INSTALL MOUNTS

1. ORIENT MOUNTS (4) SO THAT THEY ARE ROTATED 90 DEGREES AS SHOWN IN FIGURE 2.
2. ATTACH TOP MOUNT TO BIN STRUCTURE USING 5/8" DIA. OR M16 BOLTS (3).
2. ATTACH BOTTOM MOUNT TO SUPPORTING STRUCTURE USING 5/8" DIA. OR M16 BOLTS.

NOTE: WHEN USING CONCRETE UNDER CT MOUNTS, USE PLATE (PN 400419) TO PROTECT CONCRETE FROM DAMAGE DUE TO EXTREME PRESSURE.

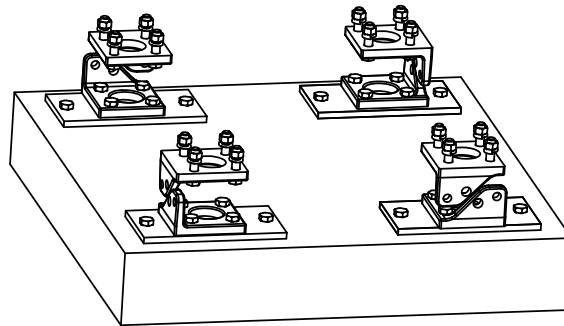


FIGURE 2

ASSEMBLE MOUNTS

4. INSTALL PLATES (8,9) USING M16 BOLTS (3), NUTS (1) AND LOCKWASHERS (2) SUPPLIED.
 - A. PASS BOLTS (10) THRU WELDED PLATE (9) AND MOUNT AS SHOWN IN FIGURE 3.
 - B. THREAD BOLT INTO INSIDE PLATE (8) LEAVING ABOUT 1/16" (2mm) SPACE BETWEEN PLATES AND MOUNT.
 - C. ATTACH NUTS (11) AND LOCKWASHERS (12) AND TIGHTEN SECURLY.

IMPORTANT: PLATES MUST BE LOOSE AND ABLE TO MOVE FREELY EVEN AFTER NUT IS TIGHTENED. SEE FIGURE 3.

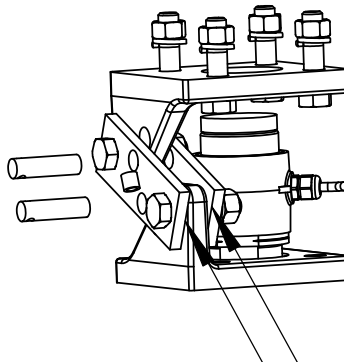


FIGURE 3

INSTALL LOAD CELLS

5. RAISE TOP MOUNT TO ALLOW SPACE FOR LOAD CELLS AND SHIMS.
6. INSTALL SHIM (5) INTO MOUNT UNDER EACH LOAD CELL (6).

NOTE: USE STEEL SHIMS (5a) FOR STATIONARY SCALE AND PLASTIC SHIMS (5b) FOR MOBILE SCALE.

7. SLIDE SEALING RING (7) ONTO BOTTOM OF LOAD CELL
8. INSTALL LOAD CELL AND TOP SHIM (5).

CAUTION: CHECK CABLES BEFORE LOWERING TOP MOUNT TO ASSURE CABLES ARE NOT PINCHED OR STRETCHED. ASSURE THAT TOP SHIM STAYS IN PLACE AS TOP MOUNT IS LOWERED.

9. LOWER TOP MOUNT ONTO LOAD CELLS.

INSTALL PINS

10. INSTALL THE TWO PINS (14) INTO THE PLATES AS SHOWN.

IMPORTANT: PLATES MUST BE LOOSE. IF NOT LOOSE, DISSASSEMBLE AND RETURN TO STEP #4.

11. INSTALL COTTER PIN (13) THRU PLATE AND PINS. BEND END OF PIN TO SECURE.

PERIODIC MAINTENANCE

EVERY 6 MONTHS:

- CHECK MOUNTS FOR LOOSE NUTS AND BOLTS.
- MAKE SURE THAT PLATES (KEY 9 AND 10) ARE FREE TO MOVE.
- CHECK MOUNTS TO MAKE SURE SHIMS HAVE NOT DETERIORATED CAUSING IMPROPER CONTACT BETWEEN LOAD CELL BODY AND CASTING.

CAUTION: DO NOT WELD NEAR INDICATOR, LOAD CELLS OR CABLES. REMOVE INDICATORS, LOAD CELLS AND CABLES FROM AREA TO BE WELDED. PLACE GROUND CLOSE TO AREA TO BE WELDED TO PREVENT CURRENT FROM PASSING THROUGH ELECTRONIC PARTS.

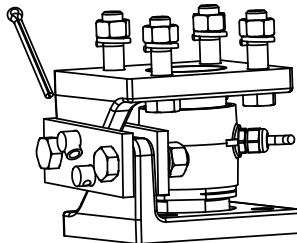


FIGURE 4