

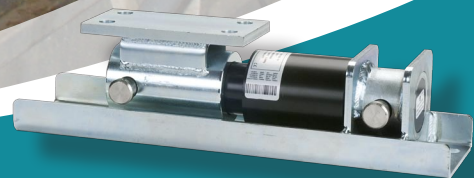
PRECISION LIVESTOCK WEIGHING SYSTEMS

Provides Stable Readings
Despite Restless Animal
Movement



4-H & FFA
WEIGHING

Digi-Star 



Providing Measuring Solutions to Optimize Agricultural Performance

Precision Livestock Weighing Systems

Digi-Star scales have been exclusively designed for the rugged animal weighing environment. Our experienced design team has carefully selected the most durable components and blended them into a superior design using the latest technology. Advanced signal filtering coupled with Digi-Star's unique Lock-On feature provides stable readings despite restless animal movement. The 14-segment backlit display provides excellent visibility in all environments.

- EZ calibration for different load cell configuration
- Compatible with any Digi-Star load cell configuration
- Lock-On weighing
- Bright Back-Lit display
- Front panel programmability for easy set-up and calibration
- Multi-language "HELP" messages in 7 languages
- Wedge style mounting brackets
- Other versatile mounting options
- Made in USA with 3-Year Warranty
- 24/7 phone support
- Low battery warning
- Pounds or kilograms
- AC/DC converter

Which DIGI-STAR STOCKWEIGH Indicator is Best For You?



SW 300

Our most economical animal indicator. Ideal for small producers, FFA Chapters and 4-H Clubs. The SW300 offers a compact, durable design with the convenience of an internal battery.

- Battery operated – 2 AA – minimum of 50 hours of service
- Auto shut off to conserve battery life
- 1" six digit lighted display provides excellent clarity



SW 600

When basic weights are required this affordable and reliable indicator is ideal for exporting weight data to your chute side software via the RS232 print port

- 1" six digit lighted display provides excellent clarity
- Power cable with battery clips
- 1- Serial DB9 output for computer hookup



SW 2600EID

Economical and user friendly. Entry level management indicator that allows you to collect, store and download EID information on individual animals.

- 1.2" 6 digit lighted display
- Compatible with all major brands of EID readers
- Automatic recording of animal weight and EID tag
- Stores up to 1,525 records
- Information is stored in a CSV file for easy downloading
- StockWeigh Link – PC Software (provided) allows easy downloading from the indicator to your PC
- Adaptable to Wireless Blue Tooth™ technology
- Two (2) DB9 serial ports for wand reader and computer interface
- Power cable with battery clips



SW 4600EID

Advanced management indicator that allows for both EID and VID input, with a customizable display screen offering easy data collection.

- Customizable multi line display offers vital information during the weighing cycle
- Weight gain calculations including average daily gain
- Compatible with all major brands of EID wand readers
- Data export via industry standard CSV format
- Easy operation with automatic weight and EID tag recording
- Visual ID entry, Premise ID, group/pen numbers, code fields, quick-data notes
- Storage for 10,000 animal files
- Adaptable to Wireless Blue Tooth™ technology
- Two (2) DB9 serial ports for wand readers and computer interface
- StockWeigh Link – PC Software (provided) allows communication between the indicator and your PC
- Easy download of animal records from the indicator to your PC
- Easy uploading of quick data note fields to the indicator from your PC
- Power cable with battery clips

DIGI-STAR STOCKWEIGH LOAD CELLS

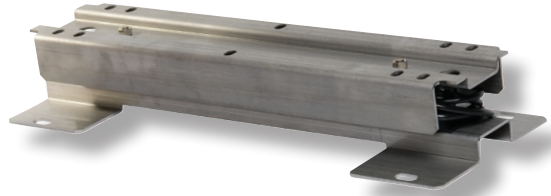
All Digi-Star load cells are perfect for rugged environments and carry a 3 year warranty from date of manufacture. Digi-Star load cells are easy and simple to install.

WRANGLER

3,300 lb capacity

Economical and portable alleyway scale system. Perfect for small producers, FFA Chapters and 4-H Clubs, and when production requires multiple weighing locations.

LENGTHS: 16" • 24" • 33-1/2"
GROSS CAPACITY: 1,650 lb each cell
Two load cells per system
ACCURACY: $\pm 1\%$ and ± 1 display count
Cable Length: 15'
24" wrangler available with cable guard.
Mate with Digi-Star's Aluminum Deck platform options.



CHUTEMASTER™ 6600

6,600 lb capacity

Use with light duty manual chutes.

LENGTHS: 33-1/2" • 44"
GROSS CAPACITY: 3,300 lb each cell
Two load cells per system
ACCURACY: $\pm 1\%$ and ± 1 display count
Cable Length: 15'



CHUTEMASTER™ 10000

10,000 lb capacity

Use with medium to heavy duty manual chutes. Designed for medium to large cattle operations.

SW Pair 1.5DB 10K
NEW Hybrid Mounts
GROSS CAPACITY: 2,500 lb each cell
Four load cells per system
ACCURACY: $\pm 1\%$ and ± 1 display count
Cable Length: 15'
With or without J-Box

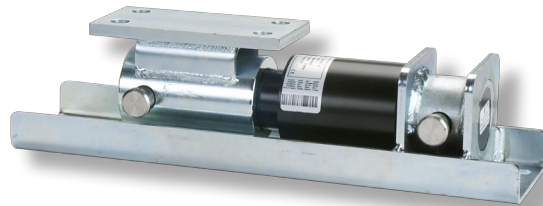


CHUTEMASTER™ 14000

14,000 lb capacity

Ideal for heavy hydraulic chutes. Designed for feedlot applications.

SW Pair 1.875 DB 14K
NEW Hybrid Mounts
GROSS CAPACITY: 3,500 lb each cell
Four load cells per system
ACCURACY: $\pm 1\%$ and ± 1 display count
Cable Length: 15'
With or without J-Box



Digi-Star★

Providing Measuring Solutions to Optimize Agricultural Performance

DIGI-STAR STOCKWEIGH ACCESSORIES

Animal Friendly Aluminum Deck

Perfect for FFA Chapters and 4-H Clubs
Offers portability and mobility between multiple weighing locations
24.5" W x 6.12" H x 90.0" L
Requires two 24" Wrangler 3,300 lb load cells
3,300 lb capacity

Junior Aluminum Deck

Perfect for hogs, sheep or other small animals
28.625" W X 4.25" H x 54.0" L
700 lb capacity

EID Wand Readers

Digi-Star SW Indicators work with most brands of EID readers



PDA Bluetooth Wireless Technology

Used with both the Wand Reader and between the Digi-Star Indicators and your PC



StockWeigh Link Software

Utility Transfer Software
Downloads EID/VID, average daily weight gain
and quick notes from SW4600EID



Digi-Star★

W5527 Hwy. 106
Fort Atkinson, WI 53538 U.S.A.

TOLL FREE: (800) 225-7695 EMAIL: sales@digi-star.com
PHONE: (920) 563-1400 WEBSITE: www.digi-star.com
FAX: (920) 563-9721

We reserve the right to modify designs, or implement product improvements, without any obligations with respect to goods purchased.
D3742